



# For Sublease

## ±14,280 SF Warehouse/Distribution Space

1234 North Post Oak, Suite 150 | Houston, Texas 77055



### Site Features:

- ±14,280 RSF total space
- ±2,199 RSF office
- Fully sprinklered
- 18' clear height
- Dock high truck loading
- 30' by 34' typical bays
- Exterior lighting
- Front load space
- Easy access to I-10, Loop 610 and Highway 290
- Lease Rate: \$0.38/RSF NNN
- Term through March 31, 2018



For further information, contact:

#### David Buescher

Vice President  
+1 713 888 4016  
david.buescher@am.jll.com

#### Geoff Perrott

Associate  
+1 713 888 4072  
geoff.perrott@am.jll.com

#### Leah Miller

Dispositions Coordinator  
+1 713 888 4066  
leah.miller@am.jll.com



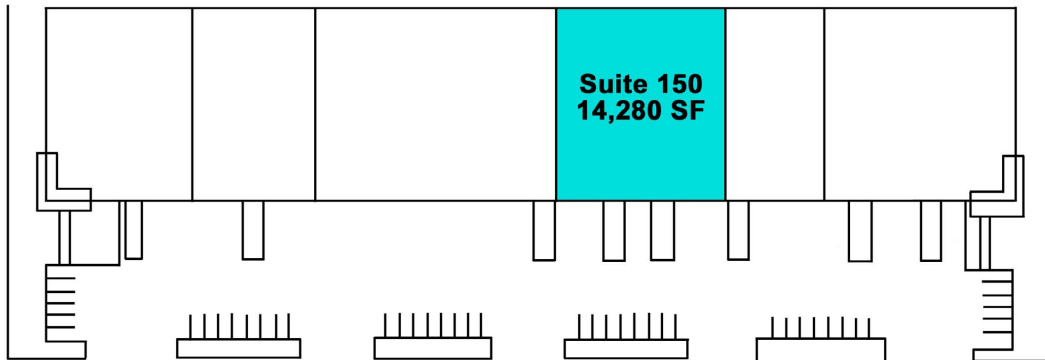
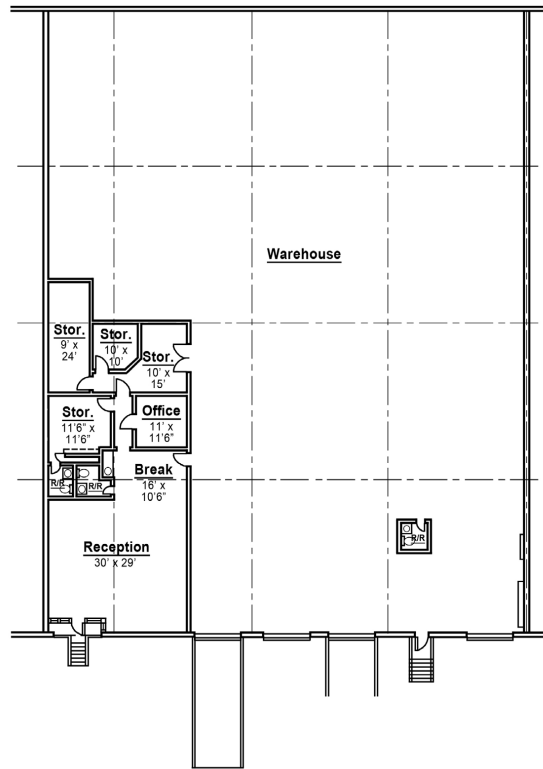
1400 Post Oak Blvd. Ste 1100  
Houston, TX 77056

The information contained herein is obtained from sources believed to be reliable. However, JLL makes no guarantees, warranties or representations as to the completeness or accuracy thereof. The presentation of this property is submitted subject to errors, omissions, change of price or conditions, and is subject to prior sale, lease or withdrawal without notice.



**For Sublease**  
**±14,280 SF Warehouse/Distribution Space**  
1234 North Post Oak, Suite 150 | Houston, Texas 77055

**Site Plan**



For further information, contact:

**David Buescher**

Vice President  
+1 713 888 4016

david.buescher@am.jll.com

**Geoff Perrott**

Associate  
+1 713 888 4072

geoff.perrott@am.jll.com

**Leah Miller**

Dispositions Coordinator  
+1 713 888 4066

leah.miller@am.jll.com



1400 Post Oak Blvd. Ste 1100  
Houston, TX 77056

The information contained herein is obtained from sources believed to be reliable. However, JLL makes no guarantees, warranties or representations as to the completeness or accuracy thereof. The presentation of this property is submitted subject to errors, omissions, change of price or conditions, and is subject to prior sale, lease or withdrawal without notice.